

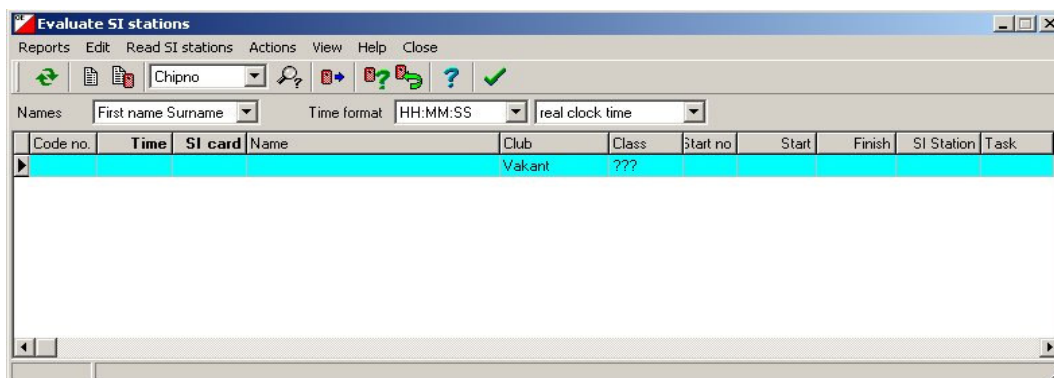
## Procedures for Identifying Did Not Start Entrants

At some events, mainly those in which competitors have pre-entered, it is important that some method be used by the organisers to keep track of people that have started their course. This can be done manually by having someone check names off the start list. That requires someone to manually go through the list and set non-starters to dns (in the Evaluate Chips window). This can be quite difficult especially if you have several starts (for different courses).

A simpler method is preferably to use the Check SI units to see who has started their course. This method will work for multiple Check stations. You can also use the Start units but you should not use both types at the same time. It is a good idea to have a person at the entrance to the start area with a Check station; all runners can insert their chip into the Check station as their name is checked off.

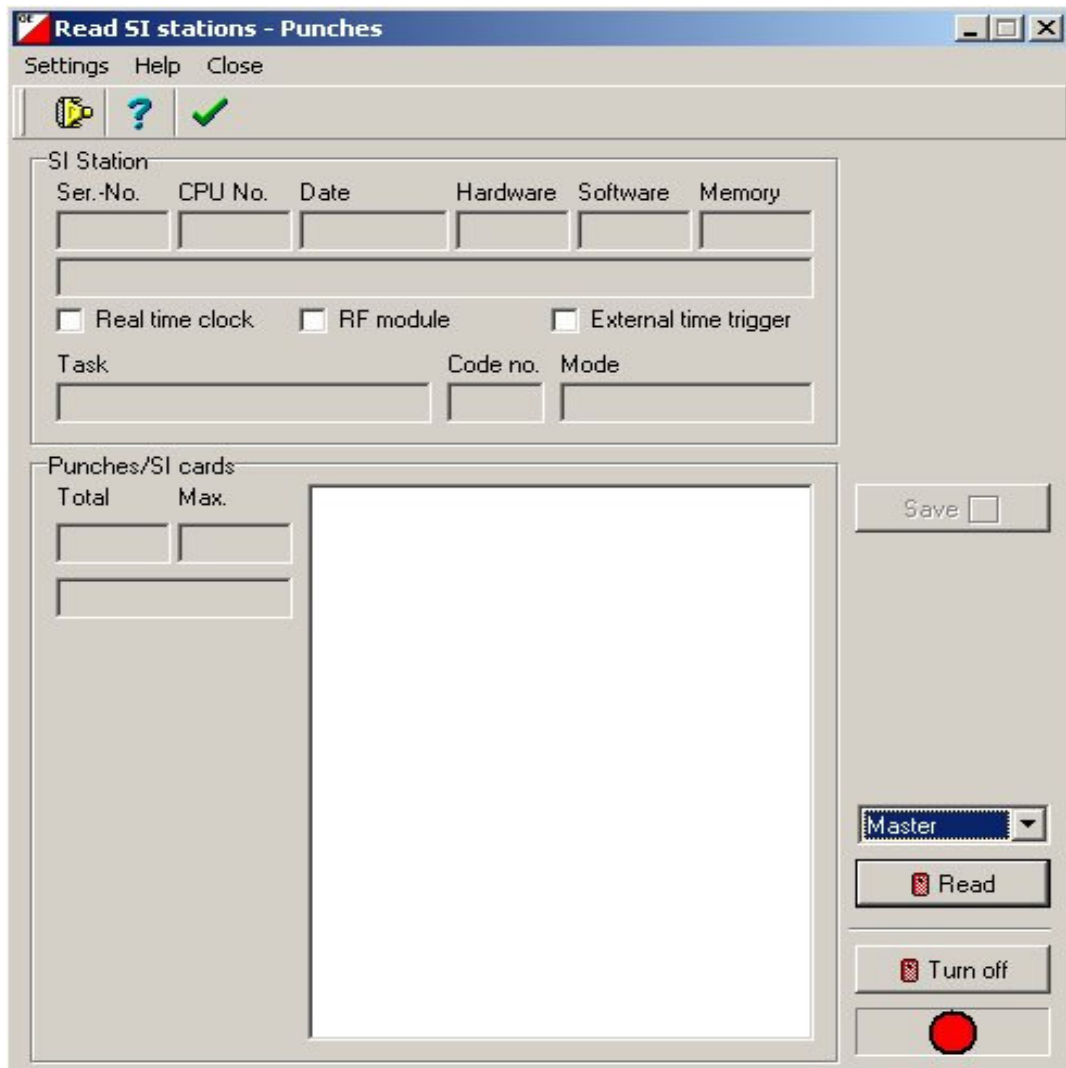
You should wait until all starts have sent off their last runners and you have all the Check stations at the computer. Get a Check station and connect it to the computer Master unit via the inductive coupling stick. If you are only using one computer and one Master unit then you will have to shut down the Read Chips window.

On the top level menu click on Competition day > Evaluate SI stations which will give the window:



If you have not accessed this window previously for this event then it should be empty.

Click **Read SI stations** (or click the relevant tool) which should show the following window:



If you are using two Master stations you may have to ensure that you are accessing the COM port not in use by the Read Chips system. Click **Settings**, or the tool under Settings.. Place the Check SI station on the Master, and make sure **Master** is showing in the box above the Read button. Click **Read**. The red lamp should turn green and, if you are lucky, it will soon turn a Magenta colour which indicates it is reading the Check SI station. The time taken to read the station will depend on much data it contains.

As it is being read the chip data will show in the list box and when all data has been read the Save button will show red. When that occurs click the **Save** button. That will write the data to the Evaluate SI stations window (you should see that under the Read window). If you have other Check stations to read then do the above with them. When all Check units have been read click **Close**. That will take you back to the Evaluate SI stations window.

At this stage the window will show the data for all the SI chips that were read.

Click **Actions > Not started runners** which will cause a small window to pop up:



Ensure that the correct box is checked then press **OK**.

That will cause another window to open along with another pop-up window that will tell you how many chips were read. If you are happy to continue then press **Yes**. That will cause all runners who are in the entries and who have not checked their chips to be set to **dns**. You can check that by going to the **Evaluate chips** window; you will have to click on the Refresh table button (top left).